

EZ Flash

Application Note

Reformulated Gasoline

Petro - 016

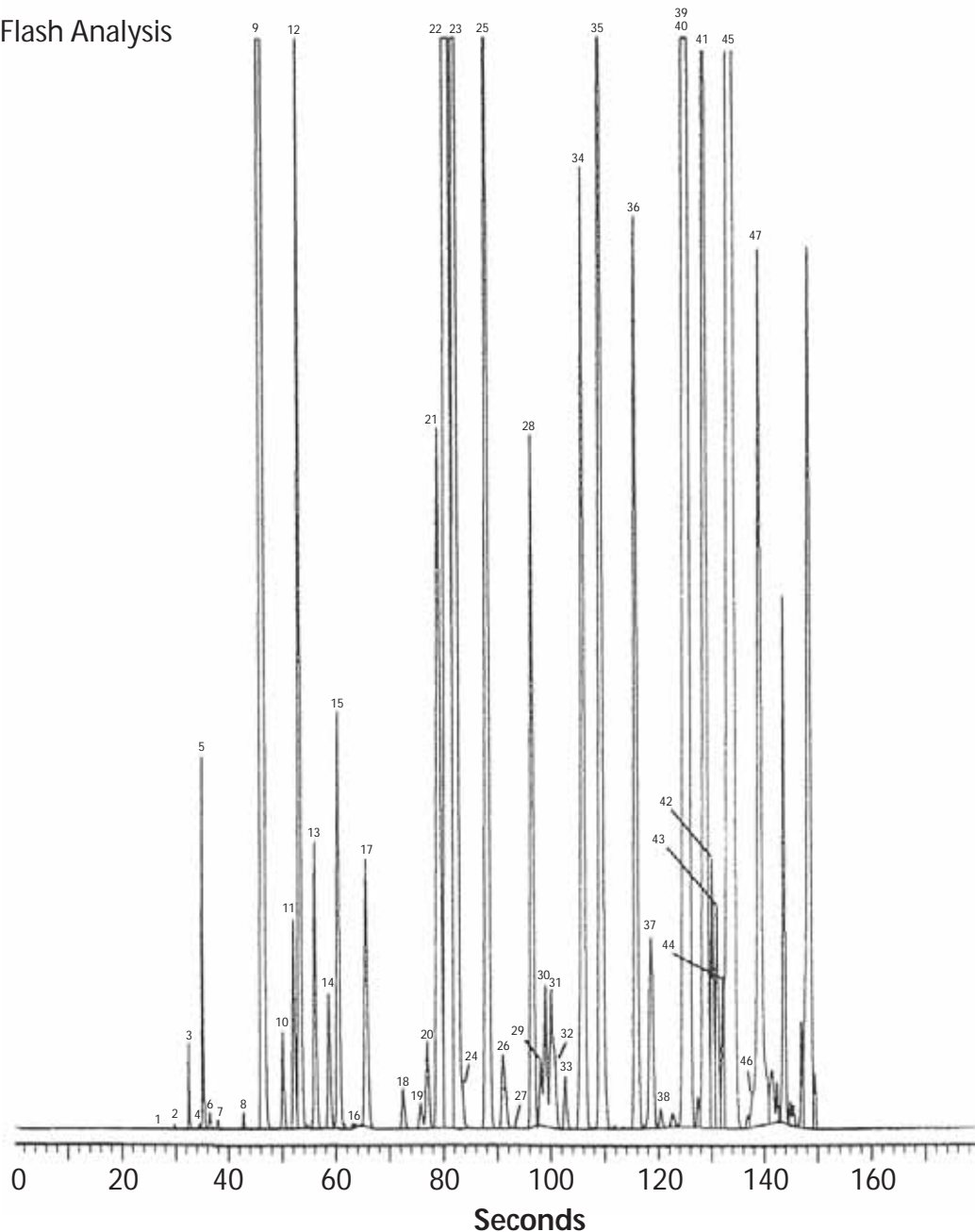
(Flash GC analysis with backflushing)

Column: 12m, 0.25mm, 0.25µm TDX-DB1
Carrier Gas: Helium @ 2 ml/min
Injector: Split/splitless @ 275°C
Detector: FID @ 300°C
Sample: Reformulated Gasoline Standard compliments of CARB
(California Air Resource Board)

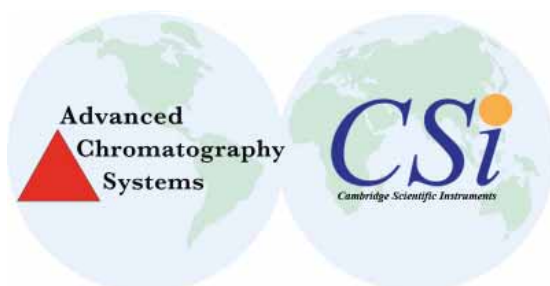
Compound Identification

1. ethane
2. propane
3. i-butane
4. isobutylene
5. n-butane
6. t-butene-2
7. 2,2-dimethylpropane
8. c-butene-2
9. i-pentane
10. pentene-1
11. 2-methylbutene-1
12. n-pentane
13. t-pentene-2
14. c-pentene-2
15. 2-methylbutene-2
16. t1,3-pentadiene
17. 2,2-dimethylbutane
18. cyclopentene
19. 2,3-dimethylbutane
20. cyclopentane
21. 2,3-dimethylbutane
22. methyl-t-butyl-ether
23. 2-methylpentane
24. 4-methyl-t-pentene-2
25. 3-methylpentane
26. 2-methylpentene-1
27. hexene-1
28. n-hexene
29. t-hexene-3
30. t-hexene-2
31. 2-methylpentene-2
32. c-hexene-2
33. 3,3-dimethylpentene-1
34. methylcyclopentane
35. 2,3-dimethylpentane
36. benzene
37. cyclohexane
38. 2-methyl-t-hexene-3
39. 2-methylhexane
40. 2,3-dimethylpentane
41. 3-methylhexane
42. 1c,3-dimethylcyclopentane
43. 1t,3-dimethylpentane
44. 3-ethylpentane
45. 2,2,3-trimethylpentane
46. t-heptene-3
47. n-heptane

Flash Analysis



Advanced Chromatography Systems
3547 Meeks Farm Road
Suite D-1
Charleston
SC 29455
USA
Tel: 843 330 3538
Fax: 843 746 4545
Email: jam@advancedlcgcs.com
Website: <http://www.advancedlcgcs.com>



Cambridge Scientific Instruments
12-15 Sedgeway Business Park
Witchford
Cambridgeshire
CB6 2HY
UK
Tel: +44 (0)1353 669916
Fax: +44 (0)1353 669917
Email: camsci@btconnect.com
Website: <http://www.camsci.co.uk>